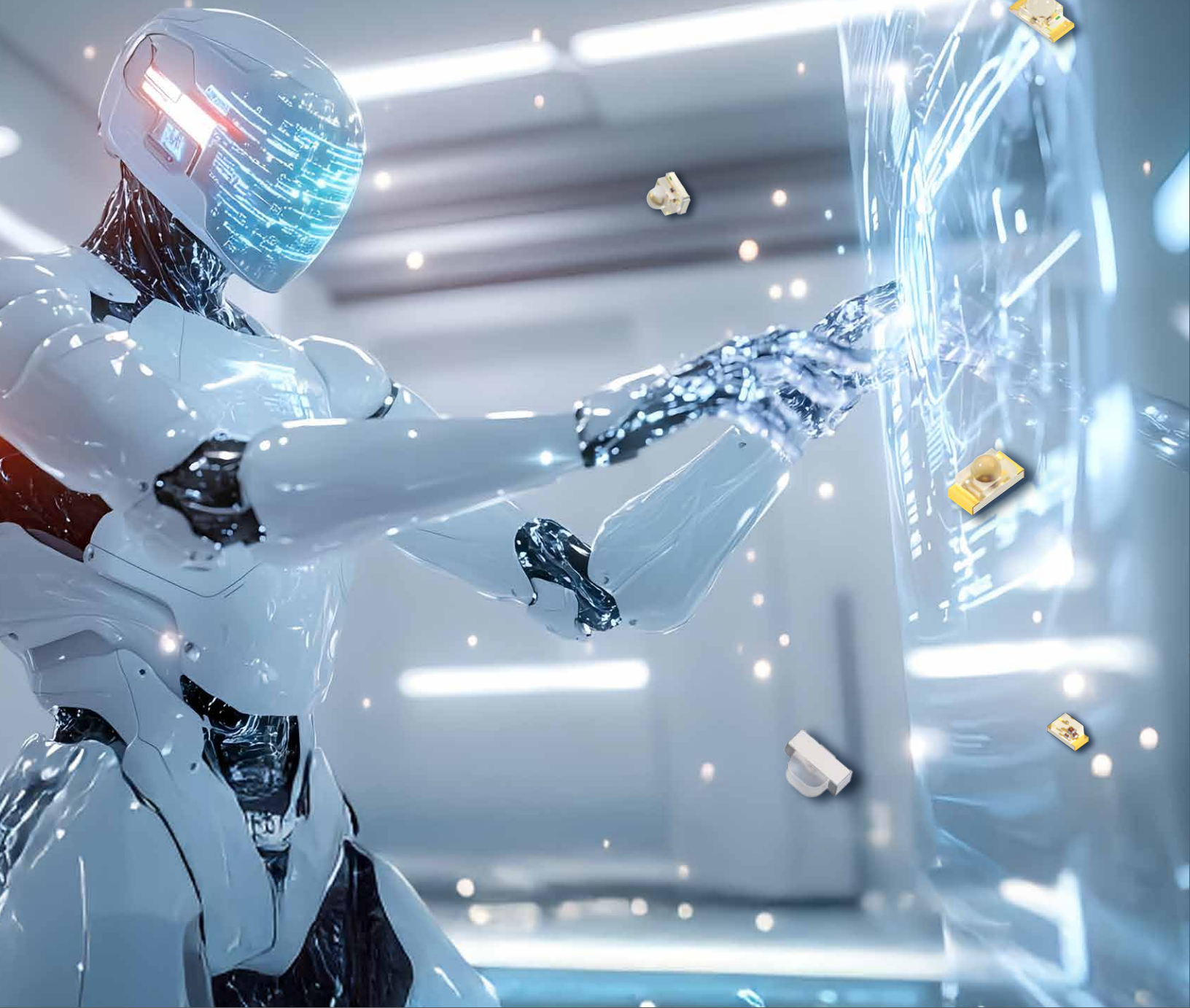


**Kingbright**<sub>USA</sub>

# High-Efficiency IR LED

940nm Wavelength Optimized



# High-Efficiency IR LED

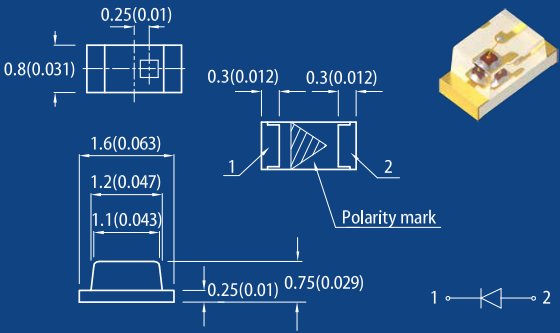
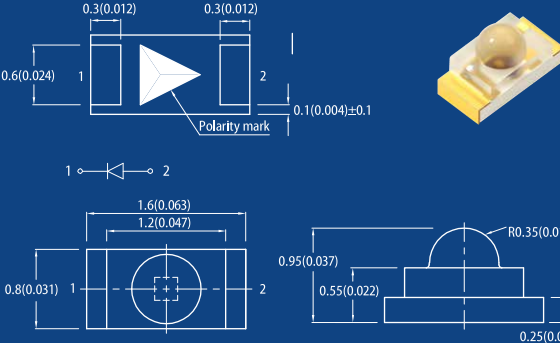
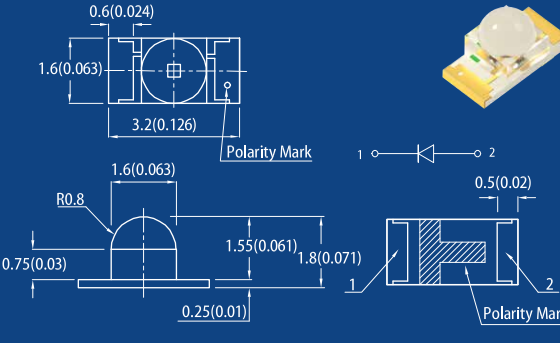
940nm Wavelength Optimized

## Product Features

- Industry standard top emitting, right angle, dome lens and subminiature packages
- Low power consumption
- High radiant power and high speed
- Mechanically and spectrally matched to phototransistor
- Viewing angle range from 10° to 160°
- RoHS compliant

## Applications

- Industrial Automation & Robotics
- High-Speed IR Data Transmission
- Surveillance & Security Systems
- Machine Vision & Object Detection
- Remote Control Systems

Part Number	Lens Type	$\lambda_P$ (nm)	Po (mW/sr) @100mA		Viewing Angle	Dimensions
			Min.	Typ.		
APT1608SF3C-100MAV	Water Clear	940	8	11	150°	
APTD1608SF3C-100MAV	Water Clear	940	12	30	120°	
APTD3216SF3C-100MAV	Water Clear	940	80	120	40°	

# High-Efficiency IR LED

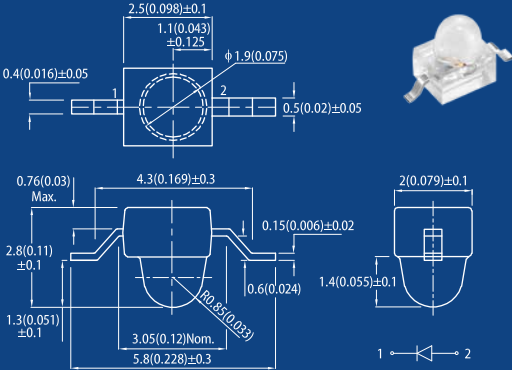
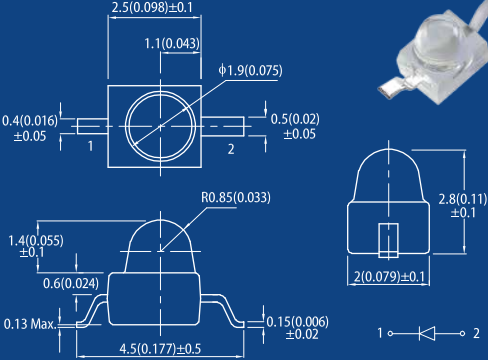
940nm Wavelength Optimized



Part Number	Lens Type	$\lambda_P$ (nm)	Po (mW/sr) @100mA		Viewing Angle	Dimensions
			Min.	Typ.		
APA3010SF3C-100MAV	Water Clear	940	8	11	160°	
APDA3020SF3C-100MAV	Water Clear	940	55	100	10°	
APTR3216SF3C-100MAV	Water Clear	940	8	11	140°	

# High-Efficiency IR LED

940nm Wavelength Optimized

Part Number	Lens Type	$\lambda P$ (nm)	$P_o$ (mW/sr) @100mA		Viewing Angle	Dimensions
			Min.	Typ.		
AM2520SF3C03-100MAV	Water Clear	940	80	120	20°	
AM2520SF3C09-100MAV	Water Clear	940	80	120	20°	



**Kingbright**<sub>USA</sub>